



## JANUARY 2026 NEWSLETTER No 5

30<sup>th</sup> January 2026

Dear Parents and Carers

A rather belated welcome back! The Spring term has got off to a great start and the children have quickly settled back into their learning and routines. It is lovely to see how confident the children now are in their classrooms and around the school, and I was extremely proud of them at our recent open morning for prospective parents. As the weather is now very changeable, please ensure that your child comes to school with a coat each day, as they spend a good deal of time outside.



### **Good News - The Big Award!**

We are proud to have recently been re-accredited with the 'BIG Award for Continued Excellence in Challenging Bullying 2026-2027'. This is our 9th year in achieving this award, demonstrating our ongoing commitment to promoting respect and diversity.



This annual assessment ensures that:

- We have a consistent approach towards anti-bullying across the school
- We include the views of all children
- We tailor our provision to match the needs of our school community
- We ensure that children feel safe and know how to share a concern if they have one.

This award reflects our school ethos and links closely with our Rights Respecting Schools ethos. Thank you to Mrs Lilley who leads on this aspect of the school's work.

### **Staffing update**

We are delighted to share with you that Mrs Anna Tobin and her husband Alistair are expecting a baby later this year. I am sure you will join us in congratulating them both and we look forward to welcoming baby Tobin when he or she arrives.

## Stay and Play sessions – Maths

This term we are again running Stay and Play sessions, this time with another focus on Maths. The purpose of these sessions is to give you an insight into how the children are taught these skills and enable you to provide further support with your child at home.



Please see the diary dates section and the year group letters for dates and times of your child's sessions.

## Class Assemblies

Once again, we will be holding class assemblies this term, where the children will celebrate their learning and in years 1 and 2, showcasing their talents! There will also be an opportunity for you to look at your child's work alongside them. Please carefully check the diary dates section so that you are able to come along and support your child.

## School Council

The School Council raise money by allowing children to come into school in their own clothes on their birthday in return for a donation of £1. So far this academic year £51 has been raised – thank you for supporting us in this way.

If your child has already had their birthday this term they may still do this, on a day of their choosing in return for a donation. If your child's birthday falls at the weekend or during a school holiday, they may wear their own clothes on the Friday before or Monday following, but don't forget the £1 donation!



Many thanks  
Mr Lake-Bromley  
School Council Lead

## Parent Consultation Evenings: Wednesday 25<sup>th</sup> & Thursday 26<sup>th</sup> March



We are holding our Spring Term Parent Consultation evenings on the above dates **from 3.30pm – 6.30pm**. This term we will be holding face-to-face consultations which will be held in the main school hall. In line with other schools', appointments are strictly for 10 minutes, and we respectfully ask that parents attend promptly in order not to keep other families waiting.

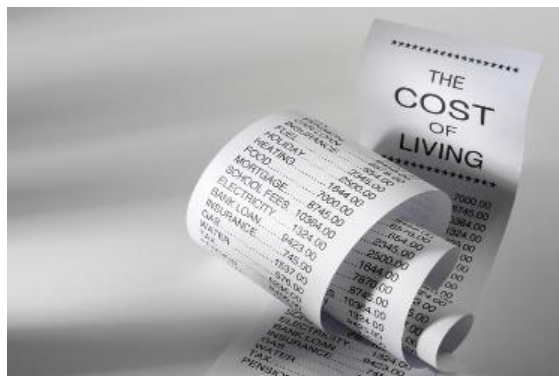
Parent consultations are to inform you about your child's progress and attainment. We understand that sometimes parents have issues they would like to discuss which may take more time than this, and so in these instances we would ask you to contact the class teacher to arrange a discussion outside of these times.

Teachers are happy to talk with parents at any point during the school year, you do not need to wait for consultation evenings to discuss concerns. Your child's work is available for you to look at following their year group assemblies, but again, if you wish to look at this at a time other than this, then please speak to your child's class teacher.

Bookings for the Spring term consultations will be released after half-term.

## **Are you Struggling Financially?**

We are aware that a number of our families are feeling the pressures of increased costs of living and that the impact of this is causing a range of issues from not being able to buy food, clothing or cover costs such as childcare. Whilst we cannot solve all these issues, the school is in a position to be able to support families in some aspects as we have access to food vouchers, childcare vouchers and can signpost you to other services who can give more specific support.



We recognise that this can be a sensitive issue where families are having difficulty but we would urge you to come and speak with us in confidence so that we can try to give you some additional support during this time.

If you would like to speak in confidence with a member of staff about this you can either approach one of us directly or send an e-mail to the office on [secretary@epinf.co.uk](mailto:secretary@epinf.co.uk) where this will be treated sensitively and someone will make contact with you. Please see below for further information about some of the support we might be able to offer.

- **Pupil Premium FSM eligible families are entitled to a £10.00 food voucher for every week within school holidays totalling £130 (13 weeks per year).**
- **For children who are not Pupil Premium FSM eligible but whose families need urgent support with food there is a Community Hub operating where support can be given.**

The Community Hub can be contacted on **0330 222 7980**, and is open 09:00 – 17:00, seven days a week (except bank holidays, when they are open between 10:00 – 14:00).

Further information can be found via [West Sussex County Council website](http://www.westsussex.gov.uk). Should you require any further information or advice about the scheme, please contact [welfarecommunities@westsussex.gov.uk](mailto:welfarecommunities@westsussex.gov.uk).

- **Tax-Free Childcare (TFC) is a childcare top-up for working parents. It can be used to help pay for accredited holiday clubs, childminders, or sports activities. TFC enables parents and carers to access childcare during the school holidays, saving them money.** TFC is available for children aged up to 11, or 17 if the child has a disability.

Many parents don't realise that TFC can be saved up on their accounts. Even if childcare is not required throughout the school terms, there is still the option to save up funds which could be used for holiday clubs or out of school care.

Please go to <https://www.childcarechoices.gov.uk/> to see if you are eligible. You can also visit <https://www.gov.uk/tax-free-childcare> for further information about the scheme.

- **Food Bank – More than Just Food!** The School is registered with the local food bank which means that we are able to issue vouchers to families in urgent need so that they can receive three days' worth of food and household items such as washing powder, toilet roll, toothpaste etc... In addition, the food bank works closely with other agencies who can provide support in other areas such as debt advice, mental health support and benefits guidance. If you are in need of a food bank voucher please speak in confidence with a member of staff.

## **Entrance Gate – Safeguarding**

Due to safeguarding concerns, we will be checking every visitor to the school before allowing them to enter. To help with this, we ask that you identify yourself, standing in front of the camera, and give the reason for visiting the school. Can we also ask that you do not let anyone follow in behind you. This only applies during school hours and not at drop off and collection times.

We thank you for your help in this matter.

## **Spotlight on Safeguarding**

### **Safeguarding Corner: January 2026** **NSPCC's *Speak out. Stay safe.* programme**



I am pleased to inform you that we are participating in the **NSPCC's *Speak out. Stay safe. Programme*** this term. *Speak out. Stay safe.* is a programme for children aged 5-11 which aims to help children understand abuse in all its forms and to recognise the signs of abuse. Children are taught to speak out if they are worried, either to a safe adult or Childline.

This child friendly programme is aligned with the curriculum and consists of age-appropriate virtual assemblies and supporting classroom-based activities which we have reviewed, alongside NSPCC volunteer led face to face workshops for children in year 2. The content is delivered in an engaging and interactive way with the help of the NSPCC mascot Buddy.

Parents and carers are asked to let school know if their child may have experienced anything (in the past or happening now) which may mean they need extra support before, during or after taking part in this programme. You can do so by speaking with your child's class teacher or myself, Mrs New or Mrs Greenway, as the safeguarding team.

If you would like to know more about the *Speak out. Stay safe.* programme visit [www.nspcc.org.uk/speakout](http://www.nspcc.org.uk/speakout).

### **Additional NSPCC resources for families to help keep children safe**

The NSPCC have shared some important information below on wider NSPCC resources and support to help keep children safe.

<p><b>Parent/Carer support</b> Take a look at information, support, advice and activities from NSPCC for parent and carers. <a href="http://www.nspcc.org.uk/parents">www.nspcc.org.uk/parents</a></p>	<p><b>Activities to extend learning at home</b> Take part in games and activities at home to help children learn about speaking out and staying safe. <a href="http://www.nspcc.org.uk/activities">www.nspcc.org.uk/activities</a></p>
<p><b>Online Safety Hub</b> For information on a range of different online safety topics including gaming, social media, sharing images, parental controls and more. <a href="http://www.nspcc.org.uk/onlinesafety">www.nspcc.org.uk/onlinesafety</a></p>	<p><b>Childline – under 12’s</b> Childline have an accessible website with advice, support, games and activities. Children can change the language, enlarge text and also listen to the content. <a href="http://www.childline.org.uk/buddy">www.childline.org.uk/buddy</a> (5-7) <a href="http://www.childline.org.uk/kids">www.childline.org.uk/kids</a> (7-11)</p>
<p><b>Talk PANTS with your children</b> Talk PANTS is a simple conversation to help keep children safe from sexual abuse. From P through to S, each letter of PANTS provides simple but important messages. Download the free resources at <a href="http://www.nspcc.org.uk/pants">www.nspcc.org.uk/pants</a>.</p>	

I hope you find this information about the NSPCC and the *Speak out. Stay safe.* programme helpful. Please do contact me if you have any further questions.

*Philippa Moulson*  
*Designated Safeguarding Lead*



**Governors Corner**

Dear Families

It has been lovely to see all the children return to school for the Spring Term and know that they have exciting learning opportunities to take part in. This is a very short term, but there is always lots to fit in and achieve! The Governors enjoy spending time in school getting to know the children and staff, being able to challenge and support leaders to ensure that East Preston Infants continues to thrive and provide our families with a wonderful school community.

In January we spent a day focusing on Early Years and the youngest pupils in our school, observing how they learn through play and how they use the outdoor environment to be inquisitive learners. We also focused on Forest School and understanding how outdoor learning follows progression of skills in line with the rest of the curriculum, providing robust and well-planned learning activities that the children not only enjoy but learn a great deal from. Four Governors spent a day in school working with school leaders and staff to focus on the priorities from the school improvement plan as part of our Governors monitoring program.

The three areas that we as Governors are responsible for are: Ensuring clarity of vision, ethos and strategic direction of the school, holding the headteacher to account for the education performance of the school and its pupils and overseeing the financial performance of the school. We are very fortunate to have a super team of staff and experienced leadership team who we work closely with. As a Board we use these three areas to help shape our action plan and monitoring visits to ensure we have all the evidence needed to show to OFSTED and the Local Authority that our school is effective. As Governors we all have an interest in the school and wanting it to be the best it can be, we work hard as volunteers because we are passionate about the outcomes for our children. You can find out more about us and the work we do on the school website.



### **Meet our Governors**

We have a planned drop in for families to come and meet members of our Board and find out who we are, what we do and what our role is. You might have never heard of a Governing Board or have questions that we might be able to answer, such as: What do Governors actually do? Who are the Governors of EPIS? Do Governors have specific roles? Could I be a Governor? If you would like to come and join us for a coffee and catch up, we will be in school on Monday 23<sup>rd</sup> March at

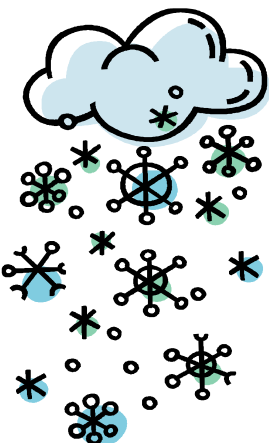
9am, after school drop off- we might even bake a cake or two! It would also be a lovely opportunity for us to meet some of our families and for you to be able to come and share your thoughts, ideas and suggestions with us, or just come along and introduce yourself. More details on this will follow.

We have also been busy recruiting for a new Governor to join our board and hope to be able to have a full complement of Governors by the end of this term. If you are interested in joining the board and feel that you have the skills set, or know of someone who would be interested, please see the school website for more information or contact our Chair or Governors, Jane Jones.

Hope this has provided some information about the Governing Board and what we do, it is a pleasure to be part of such a positive and friendly school community.

*Sharon Reynolds*  
*School Governors*

### **School Closure Procedures ...a reminder**



We can assure you that we do not take the decision to close the school lightly and only do so when deemed absolutely necessary.

If the situation does arise, please check the school website or listen to the local radio stations who read out lists of school closures regularly between 7.15am and 9.30am and detail local school closures on their websites. In addition, if we have your mobile number then you will receive a text message via MCAS. We would like to take this opportunity to thank Mrs Fiona Waller and Mrs Sue Woodcraft who send out the text alerts and update the website in order to inform parents and staff as quickly as possible.

## **Inconsiderate Parking**

Over the past few weeks we have received a large number of complaints regarding inconsiderate and dangerous parking outside the school.

Despite reminders in previous newsletters this continues to be a big problem.



We ask that parents make a note of registration numbers and report to [www.operationcrackdown.org](http://www.operationcrackdown.org) or call 01243 642222.

Whilst we understand that parking at drop off and pick up times can be very frustrating the safety of the children is paramount and we once again ask that all parents/carers are considerate. Please also respect local residents by not blocking driveways or disabled access ramps or parking on grass verges.

## **Dates for Your Diary**

Attached are some dates for you to note on your calendar. Please check each newsletter for any updates or amendments.

Thank you once again for your continuing support of the school.

*Claire New*

Claire New (Mrs)  
Headteacher



## Diary Dates

Tuesday 3 <sup>rd</sup> February	9.00am – 9.30am YR Stay and Play (Maths)
Wednesday 4 <sup>th</sup> February	9.00am – 9.30am YR Stay and Play (Maths)
Thursday 5 <sup>th</sup> February	Y2 Little Big Sing event (details to follow)
Thursday 12 <sup>th</sup> February	9.00am – 9.30am Y2 Stay and Play (Maths)
Thursday 12 <sup>th</sup> February	9.40am YR visit to Bengal Restaurant
Thursday 12 <sup>th</sup> February	FEPIS discos
Friday 13 <sup>th</sup> February	9.00am – 9.30am Y2 Stay and Play (Maths)
Friday 13 <sup>th</sup> February	Own clothes 'What makes you 'you' day'
<b>Monday 16<sup>th</sup> - Friday 20<sup>th</sup> February</b>	<b>February Half-term</b>
<b>Monday 23<sup>rd</sup> February</b>	<b>Inset Day – school closed to pupils</b>
Week beginning 2 <sup>nd</sup> March	World Book Week – details to follow
Tuesday 10 <sup>th</sup> March	9.15am Starlings Class Assembly
Tuesday 10 <sup>th</sup> March	Y2 NSPCC Speak Out, Stay Safe Workshop/assembly
Wednesday 11 <sup>th</sup> March	9.15am Blackbirds Class Assembly
Thursday 12 <sup>th</sup> March	9.15am Wagtails Class Assembly
	2.15pm Robins Class Assembly
Friday 13 <sup>th</sup> March	9.15am Puffins Class Assembly
Monday 16 <sup>th</sup> March	Scholastic Book Fair all week – details to follow
Monday 16 <sup>th</sup> March	YR – Fairy Tales Workshop – details to follow
Tuesday 17 <sup>th</sup> March	9.15am Hawks Class Assembly
Wednesday 18 <sup>th</sup> March	9.15am Kestrels Class Assembly
Thursday 19 <sup>th</sup> March	9.15am Falcons Class Assembly
Friday 20 <sup>th</sup> March	Red Nose Day – details to follow
Monday 23 <sup>rd</sup> March	9am – Meet the Governors – details to follow
Wednesday 25 <sup>th</sup> March	3.30pm – 6.30pm Parent Consultations
Thursday 26 <sup>th</sup> March	3.30pm – 6.30pm Parent Consultations
<b>Friday 27<sup>th</sup> March</b>	<b>End of Term</b>



### INSET DAYS:

Monday 23<sup>rd</sup> February 2026

Monday 13<sup>th</sup> April 2026

Friday 22<sup>nd</sup> May 2026