



DECEMBER 2025 NEWSLETTER No 4

19th December 2025

Dear Parents and Carers

It seems incredible that the end of term has already arrived! Looking back to September, I am once again amazed the wide range of events that have taken place this term. I would like to take this opportunity to thank you for all the support you give to your children and to the school. The teachers and support staff work incredibly hard throughout the year, going above and beyond what is required of them, and working positively together makes a world of difference!

Class Assemblies and Open Mornings



Next term we will once again be holding class assemblies and combining these with class Open Mornings, where you will have the opportunity to look at your child's work and share this with them. Please see the diary dates section of the newsletter for the date and time for your child's class.

'Stay and Play' sessions

Next term we will again be running 'Stay and Play' sessions for each class. These sessions will take place at drop-off time and will be an opportunity for you to see teaching and learning in context and develop more understanding about key areas of the curriculum. This time we will be focussing on Maths.



Christmas Costume Donations

If, after all the wonderful Christmas plays last week, you no longer wish to keep any of the costumes, we would be very grateful if could donate them to the school for future performances. These can be dropped off to either the classes or office. Many thanks.

Spotlight on Safeguarding

Christmas Presents and Online Safety

With Christmas just around the corner, many families are thinking about buying their child their first device - or upgrading an existing one. It's an exciting step, but it also comes with responsibility. For many children, owning a device is their first 'grown-up' responsibility, and it's important to make sure they can use it safely.



Children often go online for entertainment, social interaction and communication with friends. Because internet access can happen anywhere and anytime, we need to help them stay safe. At school, we teach online safety through Computing and PSHE lessons, but these conversations are most effective when they continue at home.

Top Tips for Safer Devices

- **Turn off AutoPlay** (especially on YouTube).
- **Set up Screen Time limits** on iOS devices (iPhone/iPad).
- **Install Google Family Link** for Android devices or iPhones running iOS 16 and above
- Use [Kiddle.co](https://www.kiddle.co) as a child-friendly search engine
- **Check the games and programmes** that they are accessing by using them together and reading guides to see if they are appropriate.

Even if your child is tech-savvy, they still need guidance to be tech-safe. Before giving them a new device, we suggest that you make sure parental controls are in place and monitor their access.

Helpful Resources

- Parental Controls for All Platforms (Apple, Android, Google):
<https://www.internetmatters.org/parental-controls/>
- Game Guides for Parents (Fortnite, Roblox, Minecraft):
<https://www.outcyders.net/parents-guides>
- Our School Website has more online safety advice [here](#)
- You might also wish to visit the Smartphone Free Childhood website
<https://www.smartphonefreechildhood.org/>

Philippa Moulson
Designated Safeguarding Lead

Governors' Corner

It's the end of the Autumn term, which means Christmas is just around the corner. For children it is a magical time of year.

I was able to attend one of the Christmas plays this year in my role as governor and also as a grandparent. I was very impressed with the performance of the children, who all had a special part to play. They all sang beautifully and the narrators and those who had lines to say spoke loud and clear.

These events involve such a great effort by all, and thanks should go especially to the teachers and support staff, whose hard work enabled the children to put on such a wonderful performance. Thanks should also go to parents who helped with costumes and learning their parts, you should be extremely proud of your children.

I hope that the children enjoy their end of term activities, with Christmas Lunch, class parties and the pantomime performance.

Mrs Sue Mansfield
Governor

Reminders:

Polite reminder: One-way entry system / registration time

We would like to politely remind parents and carers that the school operates a one-way system for drop off in the mornings. Mr Hill stands on the exit gate most mornings and recently a number of parents have quite rudely pushed past him, despite being asked to use the entry gate and not the exit one. Whilst it may mean that you have to take a few additional steps, the entry/exit system ensures a smooth flow of traffic in and out of the school site and we ask that **ALL** parents follow this. The one-way system operates regardless of whether a staff member is at the gate, so please do not push it open and walk through.



The playground gates close at **8.55am** and all children need to be in their classrooms by this time for registration. Please ensure you leave enough time in the mornings so that you arrive on time, as late arrivals cause additional work for the office staff, who are already extremely busy at the time. Thank you for your cooperation.

Junior School Transfer/ Reception 2025

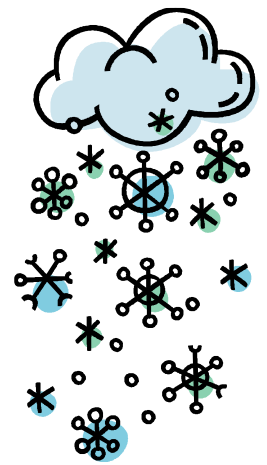


Please note that the **deadline for applications is 15th January 2026**. For those of you who have younger children due to start school in September 2026 please make sure that you apply for your place by the closing date of **15th January 2026**. These deadlines are extremely important and we have had parents in the past miss out on places as their paperwork was not submitted on time.

School Closure Procedures

We can assure you that we do not take the decision to close the school lightly and only do so when deemed absolutely necessary.

If the situation does arise, please check the school website. If we have your mobile number then you will receive a text message via the 'MCAS' (My Child at School) alert system. We would like to take this opportunity to thank Mrs Fiona Waller and Mrs Sue Woodcraft who send out the alerts and update the website in order to inform parents and staff as quickly as possible.



Dates for your Diary

Attached are some dates for you to note on your calendar, please check each newsletter for any updates or amendments.

On behalf of the staff and myself, we would like to thank you for all your cards, gifts and kind words and to wish you all a very Merry Christmas and a Happy New Year!

Claire New

Claire New (Mrs)
Headteacher



Diary Dates



Christmas holidays- Monday 22nd December to Friday 2nd January 2026	
Monday 5th January	Inset Day – school closed to pupils
Tuesday 6 th January	School restarts for pupils
Friday 9 th January	9am FEPIS Meeting
Monday 12 th January	FEPIS Pre-loved uniform sale (all week)
Tuesday 13 th January	Open Morning for 2026/27 intake 9-30am – 10.30am
Tuesday 20 th January	9.00am – 9.30pm Y1 Stay and Play (Maths)
Wednesday 21 st January	9.00am – 9.30pm Y1 Stay and Play (Maths)
Tuesday 3 rd February	9.00am – 9.30am YR Stay and Play (Maths)
Wednesday 4 th February	9.00am – 9.30am YR Stay and Play (Maths)
Thursday 5 th February	Y2 Little Big Sing event (details to follow)
Thursday 12 th February	9.00am – 9.30am Y2 Stay and Play (Maths)
Thursday 12 th February	FEPIS discos
Friday 13 th February	9.00am – 9.30am Y2 Stay and Play (Maths)
Monday 16 th - Friday 20 th February	February Half-term
Monday 23rd February	Inset Day – school closed to pupils
Week beginning 2 nd March	World Book Week – details to follow
Tuesday 10 th March	9.15am Starlings Class Assembly
Wednesday 11 th March	9.15am Blackbirds Class Assembly
Thursday 12 th March	9.15am Wagtails Class Assembly
	2.15pm Robins Class Assembly
Friday 13 th March	9.15am Puffins Class Assembly
Monday 16 th March	Scholastic Book Fair all week – details to follow
Monday 16 th March	YR – Fairy Tales Workshop – details to follow
Tuesday 17 th March	9.15am Class Assembly (Y2)
Wednesday 18 th March	9.15am Class Assembly (Y2)
Thursday 19 th March	9.15am Class Assembly (Y2)
Friday 20 th March	Red Nose Day – details to follow
Wednesday 25 th March	3.30pm – 6.30pm Parent Consultations
Thursday 26 th March	3.30pm – 6.30pm Parent Consultations
Friday 27th March	End of Term



INSET DAYS:

Monday 5th January 2026
 Monday 23rd February 2026
 Monday 13th April 2026
 Friday 22nd May 2026