



NEWSLETTER 1 SEPTEMBER 2022

9th September 2022

Dear Parents/Carers

It is with mixed emotions that I write our first newsletter of the term. Whilst it has been lovely to see the children settling back into school life, and our new children beginning the start of their school journey, the week has of course, been overshadowed by the news of the Queen's passing last night.

We recognise the young age of our children and that some may not yet be aware of the sad news. In school today, we have been answering the children's questions sensitively and on Monday we plan to have an assembly where we will reflect on key events in the life of the Queen and think about our new King. It will be a positive assembly of celebration.

Over the next few days we expect to receive guidance to schools, informing us about plans for the funeral and Coronation, and what action schools should take. We will of course inform you as soon as we know.

In the meantime, I am sure that the coming days will be very difficult for many and our thoughts are of course with the Royal Family and those who are mourning.

Welcome

Welcome back to our Year 1 and Year 2 children and their families. We would also like to extend a warm welcome to Sami (Woodpeckers), Lydia and Holly (Hawks) and Rory (Kestrels) and their families who have joined us this term.



We also warmly welcome our new children in Robins, Wagtails and Puffins classes and their families. We hope that you will quickly settle into the life of the school and that you will be very happy here with us.

Staffing News



We are delighted to be able to share with you that Miss Kristina Loosemore (TLA) gave birth to her daughter Faith during the August break. Congratulations to Kristina and her family!

Play equipment

I am sure you have noticed our wonderful new play equipment, which was installed during the summer break. This has replaced the very tired apparatus that was previously there and gives the children the opportunity for a very rich and active play and lunchtime. We hope to have the new equipment in use next week and the year groups are timetabled to use this so that everyone gets a fair turn. The equipment is designed to provide challenges for all year groups, so that the children can enjoy it throughout their time at the school. I am sure the children will be telling you all about it as they use it over the coming weeks.

Now we just need to pay for it! Thank you to everyone who has already donated towards this and to FEPIS for their donation. We still have a considerable amount to raise and so if you would like to donate, you can do so by using the following link. Thank you in advance, for your generosity.

<https://gofund.me/f47bdb79>

Please remember that the children should not use the equipment before or after school.

Midday Meals Vacancies

We currently have vacancies for various midday meals roles, with a range of flexibilities. If you feel you might be interested in any of the following then please speak with the Mr Hill (School Business Manager) for further details:



- Casual hours – sometimes at quite short notice, to cover staff absence. This is usually for 1 hour per day and involves supervising play on the playground and supporting the children in the hall while they eat.
- Regular hours - 5 days per week from between 30 – 120 minutes per day, either supervising play, the lunch hall and setting up/clearing away tables.
- Part-time hours – we can offer a range of flexibilities to suit you, from 1-5 days per week, between 30 – 120 minutes per day.

FEPIS (Friends of East Preston Infant School)



We fundraise for the school, organising fun for the children. We will be having our first meeting on **Wednesday 21st September at 9.10am** - everyone is welcome, especially our new Reception parents. New ideas are always welcome! We look forward to meeting you.

School Council

Mrs Bean is taking over the School Council this year and she is currently preparing to set up the School Council for this academic year.



Elections will take place in Year 2 on Wednesday 21st September for the four Council Leader posts. Letters will be sent home shortly to those who wish to apply. Those children who submit an application will get an opportunity to speak to the year group explaining why they think they would make a good Council Leader.

There will also be elections for the eight Council Representatives posts for Year 1 and Year 2 classes. One boy and one girl from each class will be elected by their classmates. Classes will be notified of their representatives via Marvellous Me on Friday 23rd September. Good luck to all those who want to take part.

The School Council raise money by allowing children to come into school in their own clothes on their birthday in return for a donation of £1. If your child has already had their birthday this term they may still do this, on a day of their choosing in return for a donation. If your child's birthday falls at the weekend or during a school holiday, they may wear their own clothes on the Friday before or Monday following, but don't forget the £1 donation! Thank you for supporting them in this way.

Spotlight on Safeguarding

The vulnerabilities that pupils are exposed to are ever changing, with attention falling recently on mental health issues. Did you know that one in six pupils aged 5-19 are now thought to have a mental health disorder? That's approximately three to four children in every class.



Young Minds (a leading organisation committed to the mental health of children and adolescents) defines mental health in young people as “the strength and capacity of our minds to grow and develop, to be able to overcome difficulties and challenges, and to make the most of our abilities and opportunities.” Again, factoring in subtle differences for individuals, at primary level mental health also means having: the capacity to enter and sustain satisfying personal relationships, a clear sense of identity and self-worth, the ability to play and learn so that attainments are appropriate for their age and intellect, and an acceptance that it is okay to make mistakes. With this in mind, the school community has a responsibility to look after the full spectrum of the wellbeing of pupils.

Children's mental health has now also been included in the updated document “Keeping Children Safe in Education 2022”. As part of our Safeguarding role, we need to be aware of the main risk factors associated with mental health. It is not always possible to remove the risks themselves, but often an awareness of the presence of risks will change the way a child's needs are understood and responded to.

Further resources to support parents at home:

<https://www.annafreud.org/parents-and-carers/child-in-mind/>
<https://www.youngminds.org.uk/parent/>
<https://myhappymind.org/programmes/family-programme/>

School Improvement Priorities

At our INSET day in the summer term, staff and governors met to identify school priorities for 2022-2023. Each year the school is required to identify areas that need to be developed and possibly improved. These become the basis of the School's Improvement Plan and throughout the year staff, governors and children work together to achieve these targets. By sharing our priorities with you the parents, you will be able to work with us to ensure that this very successful school becomes even more successful!



Priority 1: Address the gaps in children's cultural capital and language acquisition to raise standards of progress and attainment

Priority 2: Diminish the difference for SEND and Pupil Premium pupils

Priority 3: Embed a whole school Therapeutic Thinking approach

Priority 4: Governors will provide effective Governance including challenge/support, knowledge of impact and holding the Headteacher to account

If you have any questions about any of our priorities or would like to discuss them, please speak to either myself or one of the governors.

Classes

For your information just a reminder of the classes, teachers and support staff in each year group. Year group leaders are in bold.



Year group	Class Name	Teacher	Support staff
R	Puffins	Mrs Lorna Payne (YR)	Mr Paul Andrews
R	Wagtails	Miss Abbey Beach	Mrs Elita Finn
R	Robins	Mrs Jo Rickard	Mrs Justine Langley Mrs Samantha Pickard Mrs Sadie Watson
1	Starlings	Mrs Bean (Y1)	Mrs Dawn Boulton
1	Blackbirds	Miss Anna Woodiwiss	Miss Laura Brooks
1	Woodpeckers	Miss Molly Bouch	Mrs Louisa Houghton Mrs Gemma O'Keefe Mrs Bethany Cumberland (2 days) Mrs Sue Buchannan (3 days) Mrs Alison Lake (2 days) Miss Kristina Loosemore (Maternity)
2	Kestrels	Mrs Helena Lilley (Y2)	Mrs Chloe Chamberlain
2	Falcons	Mr Michael Lake	Mrs Carol Chilvers
2	Hawks	Miss Maria Giorkatzi	Mrs Helen Gingell Mrs Jessica Tapping Mrs Sally West

Governors Corner

On behalf of the governors, at the start of this school year, I would like to say a huge 'Welcome' to all the new children and parents, and 'Welcome Back' to all those returnees. We hope everyone settles in quickly and wish all of them a really exciting and memorable term.

Our governing body is once again on the lookout for new recruits! We need both a new co-opted (i.e. someone from the community) and a new parent governor. If you are interested in, or know someone who would be suitable for either of these roles or want further information, please contact me through the school office.

Sue Nelson
Chair of Governors

A Few Reminders!



- Medication

If your child uses an asthma inhaler or requires medication during the school day, please ensure that the office has up to date details of the treatments required and that you have completed the relevant paperwork.



- Emergency Contact Numbers and Collection During the School Day



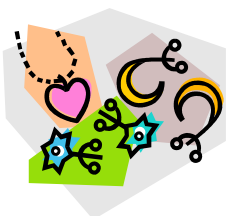
It is important that we have the correct contact numbers on which to reach you in case of emergency. If you have recently changed your telephone numbers, please inform the office as soon as possible. If you need to collect your child from school during the school day, please go to the main entrance/office.

- Play/Climbing Equipment

Children are not permitted to use the play equipment or Early Years equipment before or after school. This also applies to younger/older siblings. Please ensure that your children stay on the playground with you during these times.



- Jewellery



For safety reasons, children should not wear jewellery in school. Children with pierced ears should wear studs only please. Plain, dark colour watches, but not the game-type, are permitted. In accordance with advice from West Sussex County Council, jewellery may not be worn for any physical activity. All earrings should be taken out by the children for their PE lessons, watches removed and long hair tied back.

- Dogs on Site

Dogs are not permitted on school grounds. If necessary, they can be tied to the perimeter fence while dropping off or collecting your child/ren.

- Parking on Site



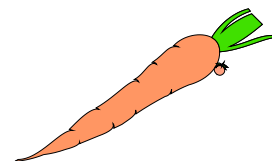
Parking is not permitted on the school grounds unless prior arrangement has been agreed with the school office.

- Snacks and Drinks Policy

The children have one break time each day (morning) when they are permitted to eat their healthy snacks. Children are encouraged to bring in a healthy snack to eat during their break, which are listed in the school healthy snacks policy, as shown below. **No other snack is permitted.**



- **Mild Cheese** (not processed products such as Cheese Strings and Dairy Dunkers)
- **Breadsticks**
- **Plain Rice Cakes**
- **Wholemeal Pitta Bread**
- **Fresh Vegetables**
- **Fresh Fruits (not fruit winders/yoyos/fruit flakes etc...)**
- **Plain Raisins (not yoghurt coated)**

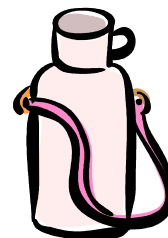


In addition all the children will receive a free piece of fruit or vegetable every day, usually at mid-morning, as part of a government scheme to encourage children to eat their daily 5 portions of fruit and vegetables.

If your child has any allergies or medical reasons why these snacks are not appropriate, then please come and talk to us.

Water

Children are encouraged to bring a water bottle to school to keep in class. **Children are only permitted to have plain water in their drinks bottles.** They are able to take drinks of water from this throughout the day. Juice, squash or flavoured water are not permitted.



Dates for your Diary

Attached are some dates for you to note on your calendar, **please check each newsletter for any updates or amendments.**



The autumn term is always a very busy one, with lots of events taking place both during and after the school day. Please look carefully at the diary dates section and make a note of the dates so that you are able to come along and join in the fun! Thank you in anticipation of your support over the coming weeks.

Claire New

Claire New (Mrs)
Head teacher



Diary Dates

Wednesday 21st September	-	9.15am FEPIS meeting – all welcome Y2 School Council Elections
Wednesday 5 th October	-	Y1 Phonics Workshop for parents 9-10am
Thursday 13 th October	-	School Grounds Morning – details to follow FEPIS 'Monster Mash' Disco – details to follow
Friday 14 th October	-	Am Harvest Celebration at St Mary's Church
Tuesday 18 th October	-	Individual Photographs
Thursday 20 th October	-	Open Morning for Prospective Parents
Friday 21st October	-	Half Term starts 3.15pm INSET day – school closed to pupils

Half Term Monday 24th to Friday 28th October inclusive

Monday 31st October	-	INSET day – school closed to pupils
Tuesday 1st November	-	Term restarts for all pupils FEPIS Bags2Schools – details to follow
Tuesday 8 th November	-	Open Morning for Prospective Parents Parent Consultations via zoom 3.45 – 6pm
Wednesday 9 th November	-	Parent Consultations via zoom 3.45 – 6pm
Thursday 10 th November	-	Parent Consultations via zoom 3.45 – 6pm
Thursday 17 th November	-	Flu Vaccinations
Tuesday 6 th December	-	Am Y2 Christmas Play Pm Y1 Christmas Play
Wednesday 7 th December	-	Am Y1 Christmas Play Pm YR Christmas Play
Thursday 8 th December	-	Am YR Christmas Play Pm Y2 Christmas Play
Friday 9 th December	-	Christmas Jumper Day
Tuesday 13 th December	-	9-10am Open Morning for current parents
Thursday 15 th December	-	Whole school Christmas lunch
	-	Pm Class Christmas Parties
Friday 16 th December	-	Pantomime in School

Tuesday 3rd January 2023 INSET Day – school closed to pupils
Term restarts for pupils on Wednesday 4th January 2023

Other INSET Days:
Monday 20th February 2023
Monday 19th June 2023